

submaterial

+1 505 891 8356  
SALES@SUBMATERIAL.COM

**FIELD**  
Wall Panel



© 2023 SUBMATERIAL LLC



## FIELD

Wall Panel



**ONE LARGE PLANE  
DIVIDED INTO MANY  
SMALLER SECTIONS  
MAPS THE LANDSCAPE  
OF OUR FIELD PANEL.**

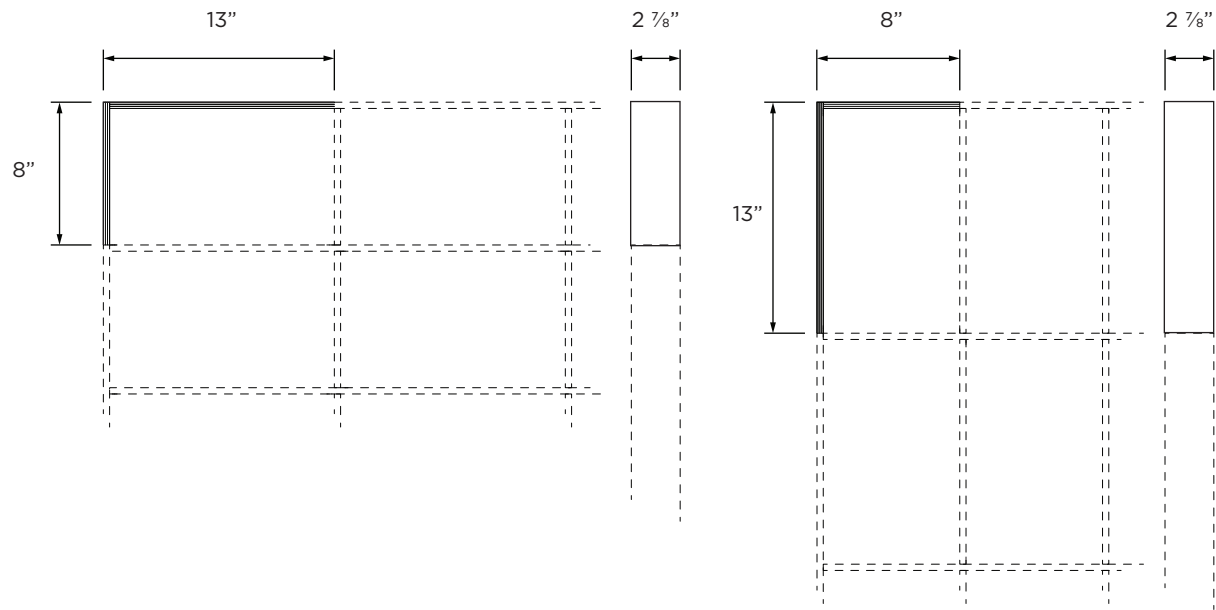
The tri-colored laminated strips of felt are placed on edge, converging and diverging within their individual frames. Somewhat muted when viewed straight on, the colors of the panel POP when seen from the side.



FIELD

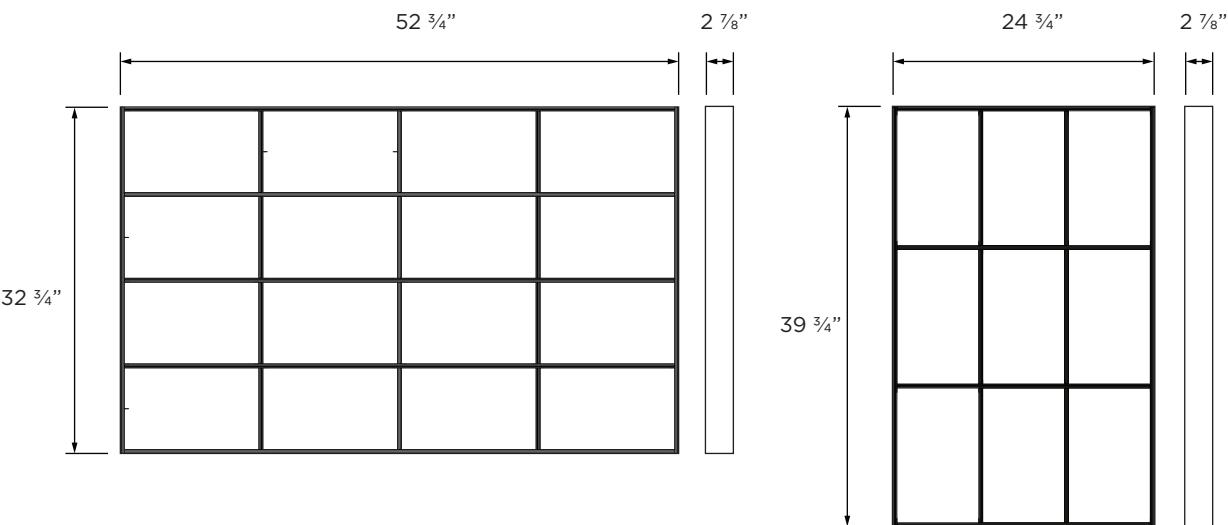
Wall Panel

MODULE DIMENSIONS



EXAMPLE DIMENSIONS

Note: Panel dimensions must be ordered in multiples of module dimension. Final dimension will be 3/4 inch greater due to final trim



FIELD

Wall Panel

CREATE YOUR PRODUCT

Diagrammed below are the materials used to create this Submaterial product. To start your ordering process, use the diagram below to assist you in pattern selection and material assignments. If you believe the customization you seek is outside of the standards listed below, please contact us. Color combinations and configurations to a product may be limited. For more information about limitations be in touch with us at sales@submaterial.com



filzfelt • **COLOR 1**  
REQUIRED



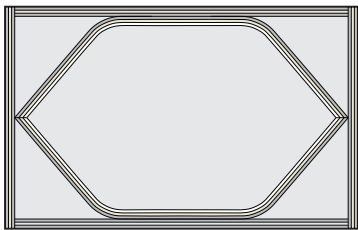
filzfelt • **COLOR 3**  
OPTIONAL



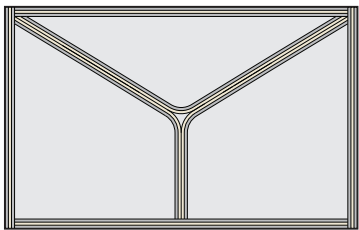
filzfelt • **COLOR 2**  
REQUIRED



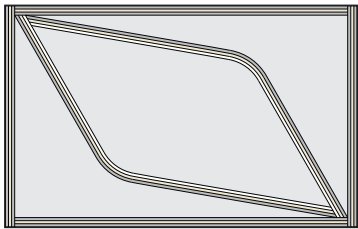
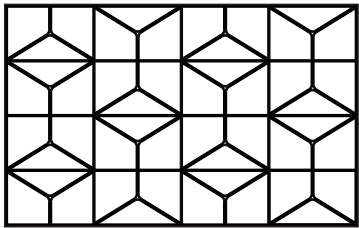
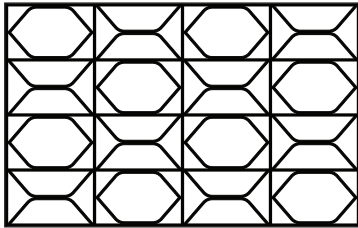
filzfelt • **COLOR 4**  
OPTIONAL



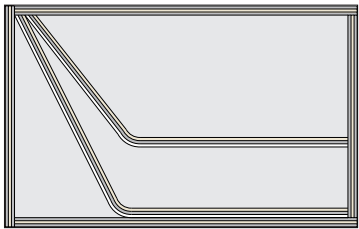
CONFLUENCE



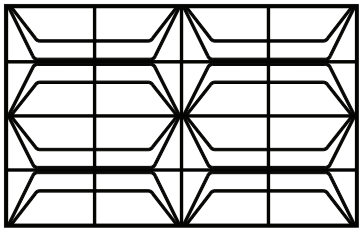
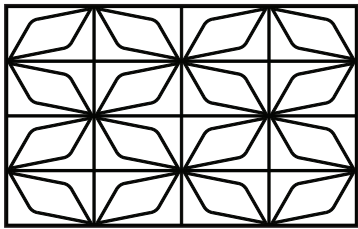
QUARTZ



ORION



EXPANSE



## FIELD

Wall Panel

## FELT

Wool felt is one of the oldest man-made textiles. A biodegradable and renewable material, wool felt is moisture resistant, self-extinguishing, and known for its thermal and acoustic insulation properties. We employ Filzfelt products which are German-milled, 100% wool manufactured. This Merino wool is sourced primarily from Australia, New Zealand, and South Africa. Slight variation in color is a result of the manufacturing with a natural material.

## filzfelt •



487 PEACH



023 CORAL



945 DRAGON FRUIT



221 RASPBERRY



137 RED WINE



209 BORDEAUX



102 CHERRY



201 RED



125 TOMATO



179 BRIGHT RED



180 TERRACOTTA



173 MANGO



105 RUST



573 COPPER



116 ORANGE



495 APRICOT



124 GOLD



131 HONEY



509 CAMEL



550 OCHRE



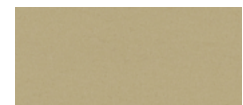
275 MUSTARD



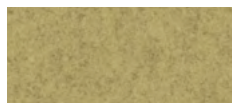
108 LEMON



403 CORN



535 SESAME



203 VANILLA



027 CHARTREUSE



384 LINDEN



713 KIWI



377 MAY GREEN



732 FERN



378 OLIVE



260 SPROUT



## FIELD

Wall Panel



343 DARK GREEN



472 MINT



312 LAGOON



405 STEEL BLUE



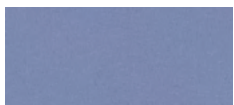
282 DARK BLUE



686 GENTIAN



458 ROBINS EGG



113 PERIWINKLE



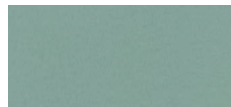
640 GARNET



269 VIOLET



435 EMERALD



575 SAGE



345 PACIFIC



215 SEA



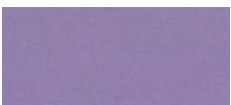
111 GRAPE



272 ROYAL BLUE



284 SKY



099 PURPLE



634 BLUSH



437 AUBERGINE



625 PINE



483 ADRIATIC



308 TEAL



540 OCEAN



626 AZURE



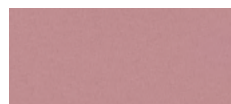
286 BLUE



613 GLACIER



667 AMETHYST



671 PEONY



250 TRUFFLE BROWN



248 JADE



548 TURQUOISE



698 FOG



533 INDIGO



647 COBALT



995 WATER



551 ICE



242 PINK



255 LILAC



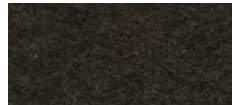
220 FAWN

## FIELD

Wall Panel



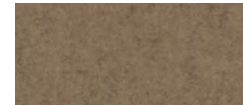
411 ALPACA



190 HEATHERED BROWN



200 RAW BROWN



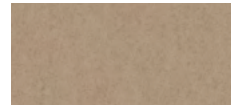
331 SAHARA



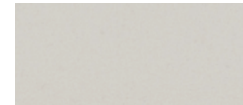
311 ALMOND



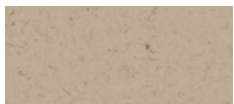
467 SAND



481 SANDSTONE



100 OFF WHITE



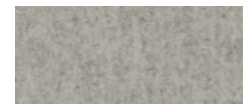
110 RAW WHITE



160 BEIGE



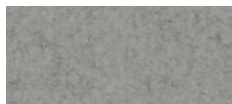
526 CHAMPAGNE



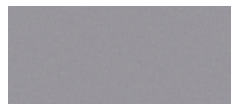
150 HEATHERED WHITE



428 SILVER



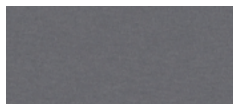
427 STONE



021 CONCRETE



170 ASH



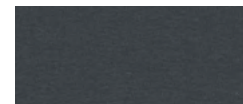
423 LIGHT GRAY



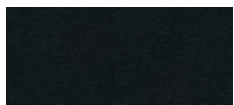
408 TAUPE



175 GRAPHITE



425 DOVE GRAY



446 HEMATITE



300 COAL



426 BLACK

Color combinations and configurations to a product may be limited. For more information about limitations be in touch with sales.

## SPECIFICATIONS

DESIGNER	Submaterial
PRODUCT NAME	Field   Confluence, Field   Quartz, Field   Orion, Field   Expanse
PRODUCT NUMBER	Confluence: PANL-SUBM-0009-03   Quartz: PANL-SUBM-0016-02   Orion: PANL-SUBM-0019-02 Expanse: PANL-SUBM-0031-03
FAMILY NAME	Field
PRODUCT CATEGORY	Wall Panel
MATERIALS	100% Merino Wool Felt
MODULE DIMENSIONS	8" x 13" or 13" x 8"
INSTALLED DEPTH	2 7/8"
COLOR OPTIONS	Filzfelt 100% Merino Wool Felt Swatch List
COLOR SPECIFICATION	To custom order a product, choose respective color assignments per product specification
INSTALLATION METHOD	French Cleat
INSTALLED DEPTH	2 7/8"
PURPOSE	Commercial or Residential Use, Interior Use Only
MAINTENANCE	The preferred steps taken for the cleaning process should consist of (in order of intensity): dusting with a lint roller, vacuuming with a clean soft brush, spot cleaning with water and mild detergent, using chemical stain removers. Periodic spot removal of lint can be achieved easily by using a standard tape lint roller. Once per year, it is recommended that the entire surface be given a light vacuum with a soft upholstery brush. Light dusting with a gentle cloth, on hard surfaces, is recommended. Most hard surfaces can take a light application of a natural, neutral-based cleaner, wiped away with a soft cloth.
LEAD TIME	Products on hand will ship out 2-3 business days and will use client's preferred method of shipping. If no preferred method of shipping is mentioned, ground shipping will be chosen. For custom orders, be in touch with sales for accurate lead times. Lead times depend upon material sourcing.
SUSTAINABILITY	100% Wool Design Felt is 100% biodegradable and Akustika 10 Substrate is 100% recyclable Contains no formaldehyde, 100% VOC free, no chemical irritants, and free of harmful substances 100% Wool Design Felt contributes to ©LEED certifications. All cork used is sustainably and efficiently sourced from Portugal, 100% VOC free, with no chemical irritants, and free of harmful substances. Ultrasuede is a premier synthetic blend of microfiber, partially using a plant-based polyester.
CUSTOM	For custom inquiries affecting colorways, sizes and quantities in the set contact Sales@submaterial.com
VARIATION	All products are handmade at our New Mexico studio. Natural variations within the color and material composition are evidence of the handmade and 100% natural origin of the materials. Product colors are only indicative, as it is not possible to assure consistency of color in a natural product due to the natural color of natural materials and absorption of dyes, finishes, and grain. Color matching cannot be guaranteed on shipments and variation will be more pronounced beyond the normal commercial range.
COLORFASTNESS TO LIGHT	Felt, Class 4-5 (40hours)
COLORFASTNESS TO CROCKING	Felt, Class 3-4 (wet), Class 4-5 (dry)
WARRANTY + RETURNS	No warranties are offered on any Submaterial products. Most of our products are made to order, therefore we offer returns or exchanges due to manufacture's defect only. Items must be returned in the original packaging and have no visible signs of wear or use. If you have a concern, please contact us within 3 business days of receipt of your products. Please retain the original packaging and wait for instructions from our sales team.