

submaterial

+1 505 891 8356
SALES@SUBMATERIAL.COM

LITHO
Wall Panel



© 2023 SUBMATERIAL LLC

LITHO

Wall Panel



**CUT AND ASSEMBLED
BY HAND, EACH RICHLY
DETAILED PANEL
CELEBRATES THE
PRECISE HANDWORK
WHICH HAS BECOME
A SUBMATERIAL
SIGNATURE.**

Highly geometric, the Litho panel features a built-up surface of concentric rectangles in vegetable-tanned cowhide. Hang as a single showpiece or curate salon-style with other artworks.



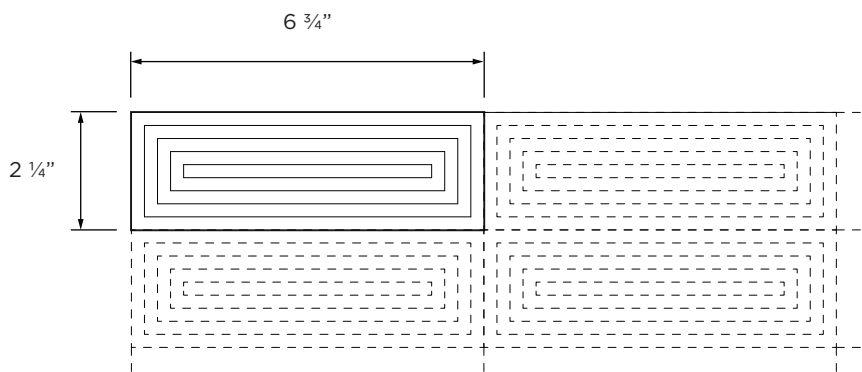
LITHO
Wall Panel

CUSTOMIZE YOUR PRODUCT

Diagrammed below are the materials used to create this Submaterial product. If you would like to make this product one-of-a-kind, select colors from the provided swatches on the following pages using the diagram to assist you in the material assignments. If you believe the customization you seek is outside of the standards listed below, please contact us. Color combinations and configurations to a product may be limited. For more information about limitations be in touch with us at sales@submaterial.com.

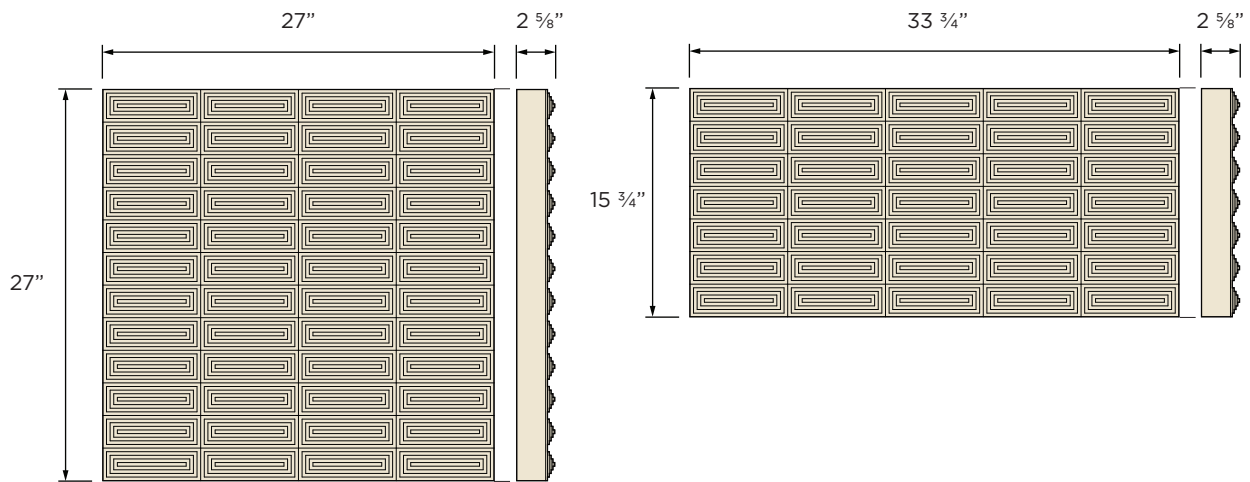


MODULE DIMENSIONS



EXAMPLE PANEL DIMENSIONS

Note: Panel dimensions must be ordered in multiples of module dimension.



LITHO

Wall Panel

LEATHER

An ancient and variable material. Each piece of leather produced is unique in character. Many features of natural leather make it superior to synthetic products including durability, comfort, beauty, suppleness, and resilience. We work exclusively with full grain leathers from Spinneybeck, which has supplied and manufactured full grain, aniline dyed Italian leathers for upholstery, architectural, and interior design use for more than five decades.

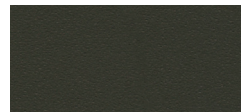
spinneybeck



BL 1905 RED



BL 1907 BURNT ORANGE



BL 1911 DARK GREEN



BL 1913 INDIGO



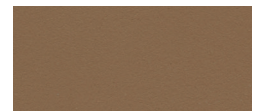
BL 1904 COGNAC



BL 1924 WARM BEIGE



BL 1903 TAN



BL 1922 KHAKI



BL 1921 TAUPE



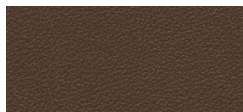
BL 1902 CHOCOLATE



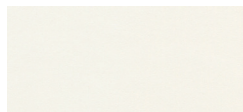
BL 1923 BROWN



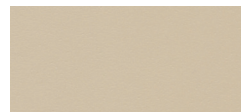
BL 1901 DARK BROWN



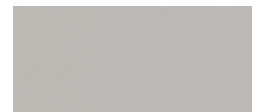
BL 1925 UMBER



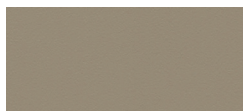
BL 1914 WHITE



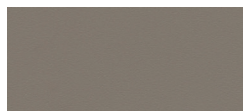
BL 1919 CREAM



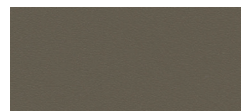
BL 1916 LIGHT GRAY



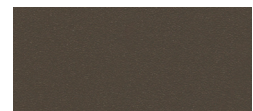
BL 1920 PUTTY



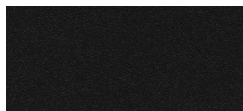
BL 1918 MEDIUM GRAY



BL 1917 GUNMETAL



BL 1915 SMOKE



BL BLACK

Color combinations and configurations to a product may be limited. For more information about limitations be in touch with sales.

LITHO

Wall Panel

DESIGNER	Submaterial
PRODUCT NAME	Litho
PRODUCT NUMBER	PANL-SUBM-0023-01
PRODUCT CATEGORY	Wall Panel
MATERIALS	Vegetable Tanned Cowhide
MODULE DIMENSIONS	6 ¾" x 2 ¼" x 2 ½"
INSTALLED DEPTH	2 ⅝"
COLOR OPTIONS	Spinneybeck Belting Leather Swatch List
COLOR SPECIFICATION	To custom order a product, choose respective color assignments per product specification.
INSTALLATION METHOD	French Cleat
PURPOSE	Commercial or Residential Use, Interior Use Only
MAINTENANCE	Wipe entire surface with a soft cloth and cool water to even out any abrasions or stains. Do not spot rub, for it will darken only that area. Occasional use of Spinneybeck Aniline Leather Cleaner, Conditioner & Protector or Aniline Leather Maintenance Kit is recommended. Other leather cleaners such as saddle soap or household cleaners that may contain harsh chemicals, alcohol or ink removers should never be used.
LEAD TIME	Products on hand will ship out 2-3 business days and will use client's preferred method of shipping. If no preferred method of shipping is mentioned, ground shipping will be chosen. For custom orders, be in touch with sales for accurate lead times. Lead times depend upon material sourcing.
SUSTAINABILITY	Belting leather is vegetable tanned.
CUSTOM	For custom inquiries affecting colorways, sizes and quantities in the set contact Sales@submaterial.com.
VARIATION	All products are handmade at our New Mexico studio. Natural variations within the color and material composition are evidence of the handmade and 100% natural origin of the materials. Product colors are only indicative, as it is not possible to assure consistency of color in a natural product due to the natural color of natural materials and absorption of dyes, finishes, and grain. Color matching cannot be guaranteed on shipments and variation will be more pronounced beyond the normal commercial range.
COLORFASTNESS TO LIGHT	Leather, Class 2-3
COLORFASTNESS TO CROCKING	Leather, Class 4 (wet), Class 4-5 (dry)
WARRANTY + RETURNS	No warranties are offered on any Submaterial products. Most of our products are made to order, therefore we offer returns or exchanges due to manufacture's defect only. Items must be returned in the original packaging and have no visible signs of wear or use. If you have a concern, please contact us within 3 business days of receipt of your products. Please retain the original packaging and wait for instructions from our sales team.