

submaterial

+1 505 891 8356
SALES@SUBMATERIAL.COM

LYRIC

Wall Hanging



© 2023 SUBMATERIAL LLC

LYRIC

Wall Hanging



WALL HANGINGS ARE ABOUT CONNECTIONS. EACH PATTERN ELEMENT IS FASHIONED INDIVIDUALLY AND THEN CONNECTED, CREATING A DETAILED WHOLE.

Fabricated in felt, cork, or leather and in variable sizes and shapes, the wall hanging adds a distinctive design piece to your space.



LYRIC

Wall Hanging

CUSTOMIZE YOUR PRODUCT

Diagrammed below are the materials used to create this Submaterial product. If you would like to make this product one-of-a-kind, select colors from the provided swatches on the following pages using the diagram to assist you in the material assignments. If you believe the customization you seek is outside of the standards listed below, please contact us. Color combinations and configurations to a product may be limited. For more information about limitations be in touch with us at sales@submaterial.com.

 spinneybeck

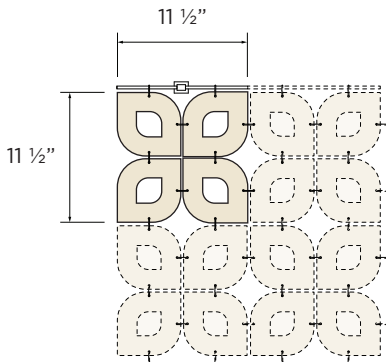
 AMORIM

 filzfelt

 Strathmore

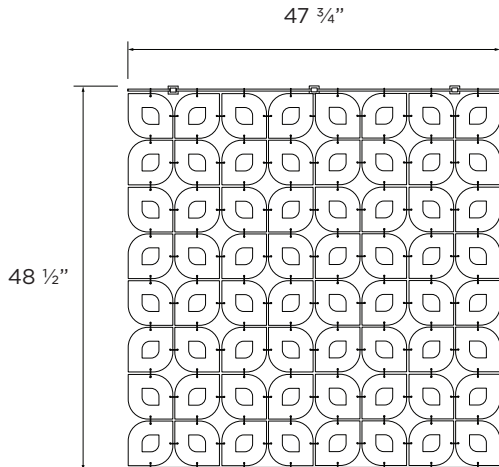
MODULE DIMENSIONS

Note: Spinneybeck Vegetable tanned leather is backed with 2-ply Strathmore Archival Museum Board. Filzfelt and Amorim materials contain a 2-ply Strathmore Archival Museum Board core, backed with another layer of Felt or Cork.



EXAMPLE WALL HANGING DIMENSIONS

Note: Panel dimensions must be ordered in multiples of module dimension. Additional length added from hanging hardware. Width of piece is an estimate due to the movement of the rings on the wall hardware.



LYRIC

Wall Hanging

LEATHER

An ancient and variable material. Each piece of leather produced is unique in character. Many features of natural leather make it superior to synthetic products including durability, comfort, beauty, suppleness, and resilience. We work exclusively with full grain leathers from Spinneybeck, which has supplied and manufactured full grain, aniline dyed Italian leathers for upholstery, architectural, and interior design use for more than five decades.

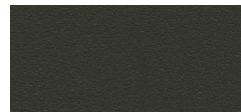
spinneybeck



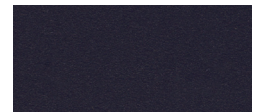
BL 1905 RED



BL 1907 BURNT ORANGE



BL 1911 DARK GREEN



BL 1913 INDIGO



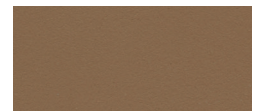
BL 1904 COGNAC



BL 1924 WARM BEIGE



BL 1903 TAN



BL 1922 KHAKI



BL 1921 TAUPE



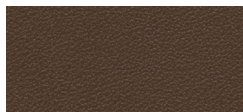
BL 1902 CHOCOLATE



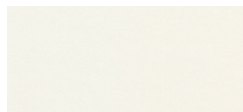
BL 1923 BROWN



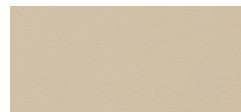
BL 1901 DARK BROWN



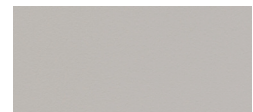
BL 1925 UMBER



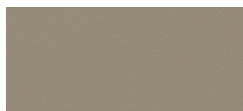
BL 1914 WHITE



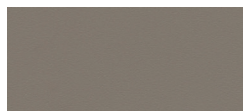
BL 1919 CREAM



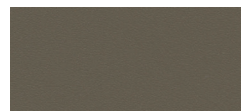
BL 1916 LIGHT GRAY



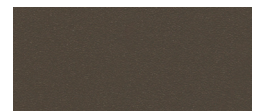
BL 1920 PUTTY



BL 1918 MEDIUM GRAY



BL 1917 GUNMETAL



BL 1915 SMOKE



BL BLACK

Color combinations and configurations to a product may be limited. For more information about limitations be in touch with sales.

LYRIC

Wall Hanging

CORK AS FACE MATERIAL

A completely natural raw material with unique properties which give it an unrivaled character. It is light, impermeable to liquids and gases, elastic and compressible, provides thermal and acoustic insulation, and is fire retardant. Furthermore, it is completely biodegradable, renewable, and recyclable. We source our cork from Corticeira Amorim, the world's largest cork processing group which has innovated and perfected the processing of this material.

AMORIM



8266 RED



8246 GREEN



8276 BLACK



8226 BLUE

Color combinations and configurations to a product may be limited. For more information about limitations be in touch with sales.

LYRIC

Wall Hanging

FELT

Wool felt is one of the oldest man-made textiles. A biodegradable and renewable material, wool felt is moisture resistant, self-extinguishing, and known for its thermal and acoustic insulation properties. We employ Filzfelt products which are German-milled, 100% wool manufactured. This Merino wool is sourced primarily from Australia, New Zealand, and South Africa. Slight variation in color is a result of the manufacturing with a natural material.

filzfelt •



487 PEACH



023 CORAL



945 DRAGON FRUIT



221 RASPBERRY



137 RED WINE



209 BORDEAUX



102 CHERRY



201 RED



125 TOMATO



179 BRIGHT RED



180 TERRACOTTA



173 MANGO



105 RUST



573 COPPER



116 ORANGE



495 APRICOT



124 GOLD



131 HONEY



509 CAMEL



550 OCHRE



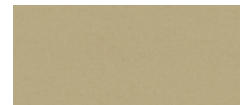
275 MUSTARD



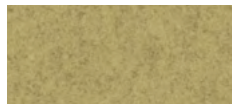
108 LEMON



403 CORN



535 SESAME



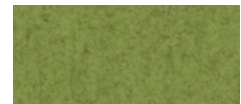
203 VANILLA



027 CHARTREUSE



384 LINDEN



713 KIWI



377 MAY GREEN



732 FERN



378 OLIVE



260 SPROUT



343 DARK GREEN



472 MINT



312 LAGOON



405 STEEL BLUE



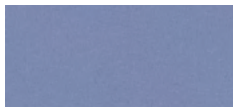
282 DARK BLUE



686 GENTIAN



458 ROBINS EGG



113 PERIWINKLE



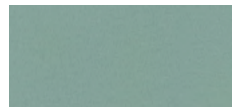
640 GARNET



269 VIOLET



435 EMERALD



575 SAGE



345 PACIFIC



215 SEA



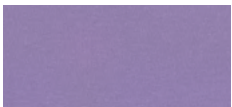
111 GRAPE



272 ROYAL BLUE



284 SKY



099 PURPLE



634 BLUSH



437 AUBERGINE



625 PINE



483 ADRIATIC



308 TEAL



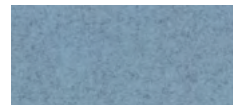
540 OCEAN



626 AZURE



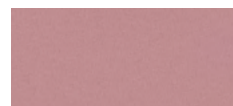
286 BLUE



613 GLACIER



667 AMETHYST



671 PEONY



250 TRUFFLE BROWN



248 JADE



548 TURQUOISE



698 FOG



533 INDIGO



647 COBALT



995 WATER



551 ICE



242 PINK



255 LILAC



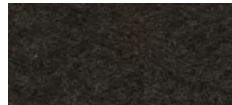
220 FAWN

LYRIC

Wall Hanging



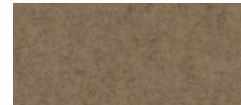
411 ALPACA



190 HEATHERED BROWN



200 RAW BROWN



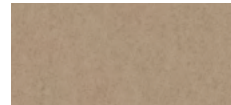
331 SAHARA



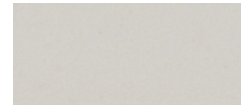
311 ALMOND



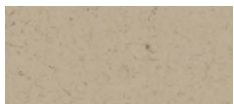
467 SAND



481 SANDSTONE



100 OFF WHITE



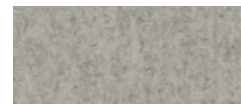
110 RAW WHITE



160 BEIGE



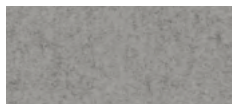
526 CHAMPAGNE



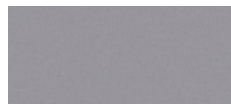
150 HEATHERED WHITE



428 SILVER



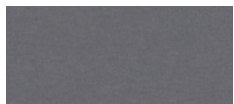
427 STONE



021 CONCRETE



170 ASH



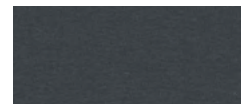
423 LIGHT GRAY



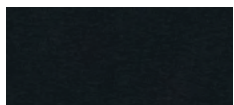
408 TAUPE



175 GRAPHITE



425 DOVE GRAY



446 HEMATITE



300 COAL



426 BLACK

Color combinations and configurations to a product may be limited. For more information about limitations be in touch with sales.

LYRIC

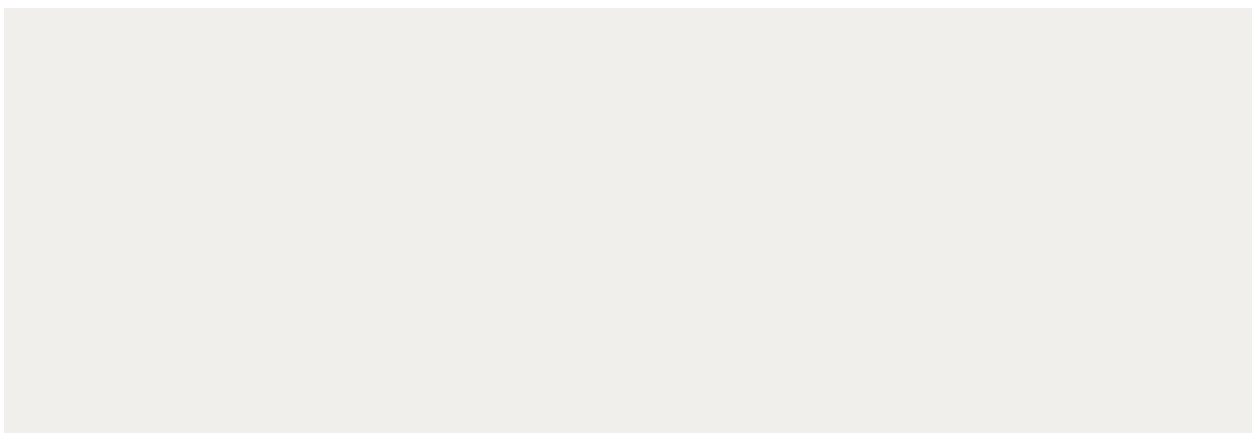
Wall Hanging

MUSEUM BOARD

Strathmore Museum Mounting Board successfully challenges the effects of time, as well as the environment, upon valued works of art. Archival and acid free made with 100% cotton. The surface is designed to deliver a smoother, cleaner cut. The colors are solid throughout the board and meet the Library of Congress Standards for Archival Properties.



GRAY



ANTIQUE WHITE

Color combinations and configurations to a product may be limited. For more information about limitations be in touch with sales.

SPECIFICATIONS

DESIGNER	Submaterial
PRODUCT NAME	Lyric Wall Hanging
PRODUCT NUMBER	WLHG-SUBM-0005-01
PRODUCT CATEGORY	Wall Hanging
MATERIALS	Vegetable Tanned Cowhide, or 100% Merino Wool Felt, or Sustainably Sourced Cork paired with an Archival + Acid Free 2-Ply Museum Board
MODULE DIMENSIONS	11 ½" x 11 ½", Wall Hanging is designed symmetrically, be in contact with sales for accurate sizes designed for your space.
COLOR OPTIONS	Filzfelt 100% Merino Wool Felt Swatch List, SpinneyBeck Belting Leather Swatch List, Amorim Cork Swatch List, Strathmore Acid-Free, Archival 2-Ply Museum Board
COLOR SPECIFICATION	To custom order a product, choose respective color assignments per product specification.
INSTALLATION METHOD	Wall Mounted Bracket
INSTALLED DEPTH	1"
PURPOSE	Residential or Commercial Use, Interior Use Only
MAINTENANCE	Wipe entire surface with a soft cloth and cool water to even out any abrasions or stains. Do not spot rub, for it will darken only that area. Occasional use of Spinneybeck Aniline Leather Cleaner, Conditioner & Protector or Aniline Leather Maintenance Kit is recommended. Other leather cleaners such as saddle soap or household cleaners that may contain harsh chemicals, alcohol or ink removers should never be used. Wood and aluminum hardware are finished in a way so that only occasional dusting is needed. If stain or spot clean is needed on wooden surface, use appropriate hardwood cleaner.
LEAD TIME	Products on hand will ship out 2-3 business days and will use client's preferred method of shipping. If no preferred method of shipping is mentioned, ground shipping will be chosen. For custom orders, be in touch with sales for accurate lead times. Lead times depend upon material sourcing.
SUSTAINABILITY	100% Wool Design Felt is 100% biodegradable and Akustika 10 Substrate is 100% recyclable, contains no formaldehyde, 100% VOC free, no chemical irritants, and free of harmful substances. 100% Wool Design Felt contributes to (c symbol) LEED certifications. All cork used is sustainably and efficiently sourced from Portugal, 100% VOC free, with no chemical irritants, and free of harmful substances. Ultrasuede is a premier synthetic blend of microfiber, partially using a plant-based polyester
CUSTOM	For custom inquiries affecting colorways, sizes and quantities in the set contact Sales@submaterial.com.
VARIATION	All products are handmade at our New Mexico studio. Natural variations within the color and material composition are evidence of the handmade and 100% natural origin of the materials. Product colors are only indicative, as it is not possible to assure consistency of color in a natural product due to the natural color of natural materials and absorption of dyes, finishes, and grain. Color matching cannot be guaranteed on shipments and variation will be more pronounced beyond the normal commercial range.
COLORFASTNESS TO LIGHT	Felt, Class 4-5 (40hours), Leather, Class 2-3
COLORFASTNESS TO CROCKING	Felt, Class 3-4 (wet), Class 4-5 (dry), Leather, Class 4 (wet), Class 4-5 (dry)
WARRANTY + RETURNS	No warranties are offered on any Submaterial products. Most of our products are made to order, therefore we offer returns or exchanges due to manufacturer's defect only. Items must be returned in the original packaging and have no visible signs of wear or use. If you have a concern, please contact us within 3 business days of receipt of your products. Please retain the original packaging and wait for instructions from our sales team.