

submaterial

+1 505 891 8356
SALES@SUBMATERIAL.COM

MURMUR TREES

Object



© 2023 SUBMATERIAL LLC

MURMUR TREES

Object



**HANDMADE IN OUR
STUDIO WITH BASES
IN SOLID WOOD,
LEAVES IN VEGETABLE-
TANNED COWHIDE AND
ANODIZED ALUMINUM
HARDWARE.**

Sold in sets of three – Murmur trees are perfectly sized for any table. Each Murmur Tree set includes trees varying in height from 14 ½ to 16 ½ inches. Leaves can be rotated to a desired composition.



MURMUR TREES

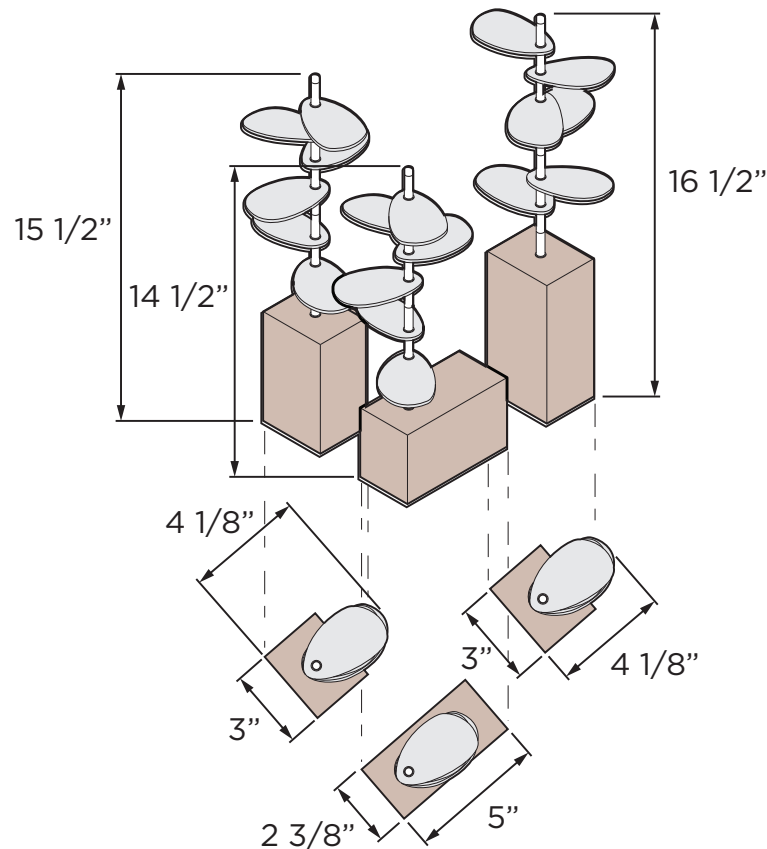
Object

CUSTOMIZE YOUR PRODUCT

Diagrammed below are the materials used to create this Submaterial product. If you would like to make this product one-of-a-kind, select colors from the provided swatches on the following pages using the diagram to assist you in the material assignments. If you believe the customization you seek is outside of the standards listed below, please contact us. Color combinations and configurations to a product may be limited. For more information about limitations be in touch with us at sales@submaterial.com.



STANDARD DIMENSIONS



MURMUR TREES

Object

LEATHER

An ancient and variable material. Each piece of leather produced is unique in character. Many features of natural leather make it superior to synthetic products including durability, comfort, beauty, suppleness, and resilience. We work exclusively with full grain leathers from Spinneybeck, which has supplied and manufactured full grain, aniline dyed Italian leathers for upholstery, architectural, and interior design use for more than five decades.

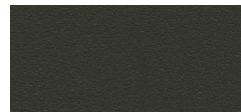
spinneybeck



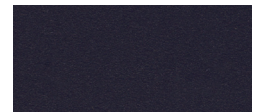
BL 1905 RED



BL 1907 BURNT ORANGE



BL 1911 DARK GREEN



BL 1913 INDIGO



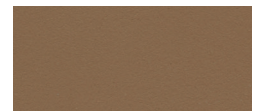
BL 1904 COGNAC



BL 1924 WARM BEIGE



BL 1903 TAN



BL 1922 KHAKI



BL 1921 TAUPE



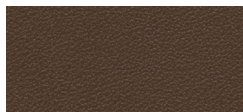
BL 1902 CHOCOLATE



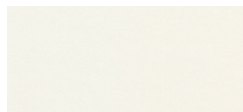
BL 1923 BROWN



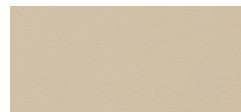
BL 1901 DARK BROWN



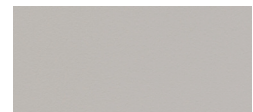
BL 1925 UMBER



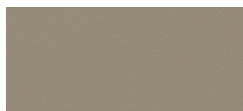
BL 1914 WHITE



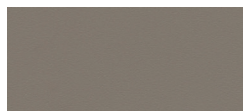
BL 1919 CREAM



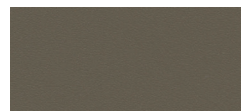
BL 1916 LIGHT GRAY



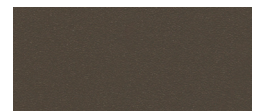
BL 1920 PUTTY



BL 1918 MEDIUM GRAY



BL 1917 GUNMETAL



BL 1915 SMOKE



BL BLACK

Color combinations and configurations to a product may be limited. For more information about limitations be in touch with sales.

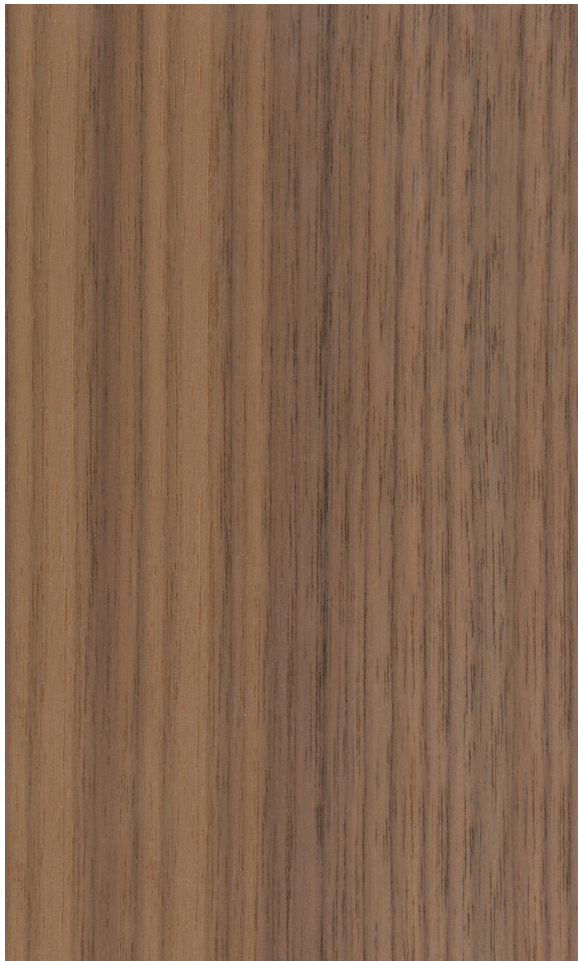
MURMUR TREES

Object

WOOD

The wood used in Submaterial objects such as the Spindle Coaster Set and Murmur Trees is solid stock hardwood. Currently, we offer white oak and walnut. These hardwoods are grown domestically and whenever possible we source wood from the Southwest. We take the use of ethically and sustainably sourced materials seriously. We make every effort to acquire wood from responsibly managed forests that provide environmental, social, and economic benefits.

submaterial **WOOD**



WALNUT



WHITE OAK

Color combinations and configurations to a product may be limited. For more information about limitations be in touch with sales.

MURMUR TREES

Object

DESIGNER	Submaterial
PRODUCT NAME	Murmur Trees
PRODUCT NUMBER	OBJT-SUBM-0006-01
FAMILY NAME	Murmur
PRODUCT CATEGORY	Object
MATERIALS	Vegetable Tanned Cowhide, Solid Wood, Anodized Aluminum Hardware
STANDARD SIZES	Small Set of Three
ITEM WEIGHT	4lbs
COLOR OPTIONS	SpinneyBeck Belting Leather Swatch List, Submaterial Wood Swatch List
COLOR SPECIFICATION	1 leather color to leaves, 1 wood color to bases, aluminum hardware cannot be interchanged.
INSTALLATION METHOD	Rotate and arrange leaves
PURPOSE	Residential
MAINTENANCE	Wipe entire surface with a soft cloth and cool water to even out any abrasions or stains. Do not spot rub, for it will darken only that area. Occasional use of Spinneybeck Aniline Leather Cleaner, Conditioner & Protector or Aniline Leather Maintenance Kit is recommended. Other leather cleaners such as saddle soap or household cleaners that may contain harsh chemicals, alcohol or ink removers should never be used. Wood and aluminum hardware are finished in a way so that only occasional dusting is needed. If stain or spot clean is needed on wooden surface, use appropriate hardwood cleaner.
LEAD TIME	Products on hand will ship out 2-3 business days and will use client's preferred method of shipping. If no preferred method of shipping is mentioned, ground shipping will be chosen. For custom orders, be in touch with sales for accurate lead times. Lead times depend upon material sourcing.
SUSTAINABILITY	Belting Leather is vegetable tanned, Wood acquired from responsibly managed forests, when possible.
CUSTOM	For custom inquiries affecting colorways, sizes and quantities in the set contact Sales@submaterial.com.
VARIATION	All products are handmade at our New Mexico studio. Natural variations within the color and material composition are evidence of the handmade and 100% natural origin of the materials. Product colors are only indicative, as it is not possible to assure consistency of color in a natural product due to the natural color of natural materials and absorption of dyes, finishes, and grain. Color matching cannot be guaranteed on shipments and variation will be more pronounced beyond the normal commercial range.
COLORFASTNESS TO LIGHT	Leather, Class 2-3
COLORFASTNESS TO CROCKING	Leather, Class 4-5 (dry), Class 4 (wet)
WARRANTY + RETURNS	No warranties are offered on any Submaterial products. Most of our products are made to order, therefore we offer returns or exchanges due to manufacturer's defect only. Items must be returned in the original packaging and have no visible signs of wear or use. If you have a concern, please contact us within 3 business days of receipt of your products. Please retain the original packaging and wait for instructions from our sales team.