

submaterial

+1 505 891 8356
SALES@SUBMATERIAL.COM

ORION FLAT

Wall Panel



© 2023 SUBMATERIAL LLC

ORION FLAT

Wall Panel



**THE FELT LAYERS
ARE RENDERED IN
CONTRASTING COLORS,
HIGHLIGHTING THE
NEGATIVE SPACES
WHICH PRODUCE A
LOW-SET PANEL.**

A play on the high dimensionality of the Odessa panel, the Odessa Flat is its inverse. Instead of creating height with felt tabs on end, this panel seems to dig below the surface. Like the arroyos that crisscross our New Mexico home, Odessa Flat maps a series of shallow, offset but connected channels.



ORION FLAT

Wall Panel

CUSTOMIZE YOUR PRODUCT

Diagrammed below are the materials used to create this Submaterial product. If you would like to make this product one-of-a-kind, select colors from the provided swatches on the following pages using the diagram to assist you in the material assignments. If you believe the customization you seek is outside of the standards listed below, please contact us. Color combinations and configurations to a product may be limited. For more information about limitations be in touch with us at sales@submaterial.com.



filzfelt • **ONE COLOR**
ONE FACE, ONE REVEAL, ONE
BACKGROUND COLOR



filzfelt • **TWO COLORS**
50% OF EACH FACE, ONE REVEAL,
ONE BACKGROUND COLOR

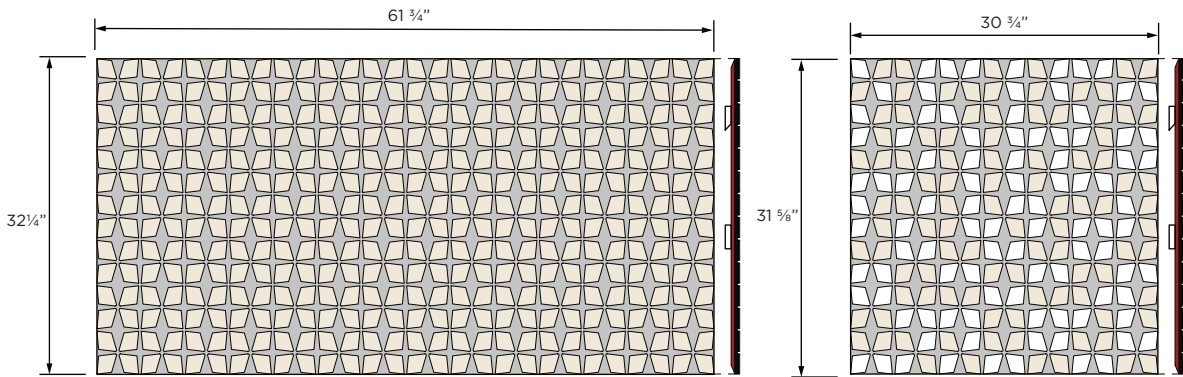


filzfelt • **FOUR COLORS**
25% OF EACH FACE, ONE REVEAL,
ONE BACKGROUND COLOR



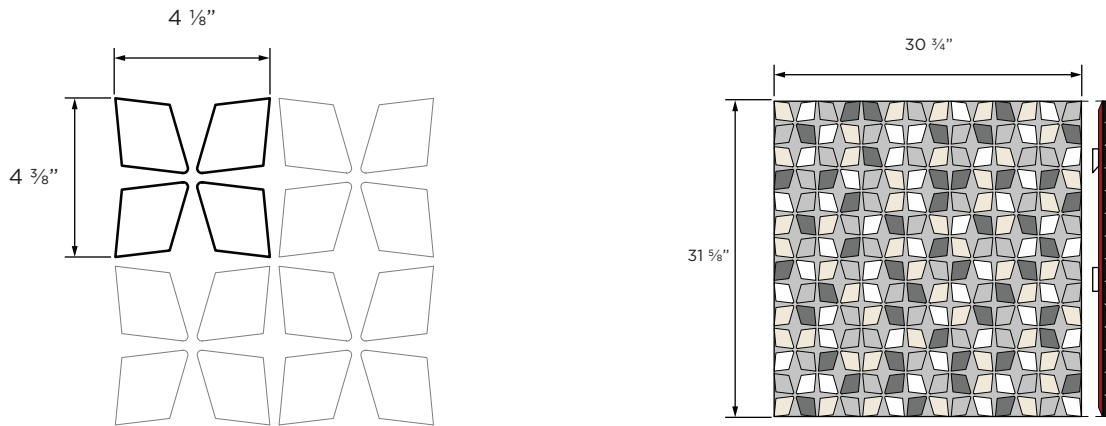
submaterial **WOOD**

EXAMPLE PANEL DIMENSIONS AND COLOR ASSIGNMENTS



MODULE DIMENSIONS

Note: Panel dimensions must be ordered in multiples of module dimension.



ORION FLAT

Wall Panel

FELT

Wool felt is one of the oldest man-made textiles. A biodegradable and renewable material, wool felt is moisture resistant, self-extinguishing, and known for its thermal and acoustic insulation properties. We employ Filzfelt products which are German-milled, 100% wool manufactured. This Merino wool is sourced primarily from Australia, New Zealand, and South Africa. Slight variation in color is a result of the manufacturing with a natural material.

filzfelt •



487 PEACH



023 CORAL



945 DRAGON FRUIT



221 RASPBERRY



137 RED WINE



209 BORDEAUX



102 CHERRY



201 RED



125 TOMATO



179 BRIGHT RED



180 TERRACOTTA



173 MANGO



105 RUST



573 COPPER



116 ORANGE



495 APRICOT



124 GOLD



131 HONEY



509 CAMEL



550 OCHRE



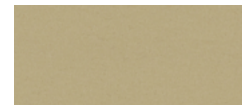
275 MUSTARD



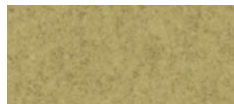
108 LEMON



403 CORN



535 SESAME



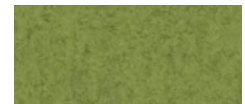
203 VANILLA



027 CHARTREUSE



384 LINDEN



713 KIWI



377 MAY GREEN



732 FERN



378 OLIVE



260 SPROUT



343 DARK GREEN



435 EMERALD



625 PINE



248 JADE



472 MINT



575 SAGE



483 ADRIATIC



548 TURQUOISE



312 LAGOON



345 PACIFIC



308 TEAL



698 FOG



405 STEEL BLUE



215 SEA



540 OCEAN



533 INDIGO



282 DARK BLUE



111 GRAPE



626 AZURE



647 COBALT



686 GENTIAN



272 ROYAL BLUE



286 BLUE



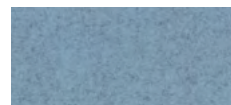
995 WATER



458 ROBINS EGG



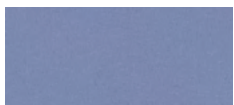
284 SKY



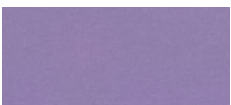
613 GLACIER



551 ICE



113 PERIWINKLE



099 PURPLE



667 AMETHYST



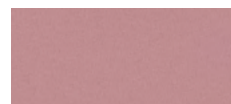
242 PINK



640 GARNET



634 BLUSH



671 PEONY



255 LILAC



269 VIOLET



437 AUBERGINE



250 TRUFFLE BROWN



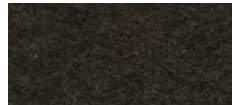
220 FAWN

ORION FLAT

Wall Panel



411 ALPACA



190 HEATHERED BROWN



200 RAW BROWN



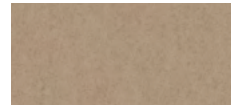
331 SAHARA



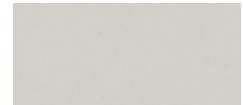
311 ALMOND



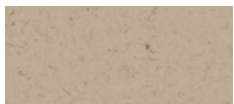
467 SAND



481 SANDSTONE



100 OFF WHITE



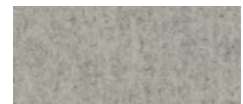
110 RAW WHITE



160 BEIGE



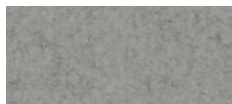
526 CHAMPAGNE



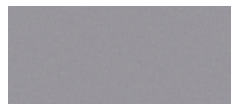
150 HEATHERED WHITE



428 SILVER



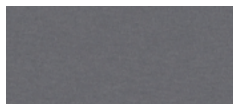
427 STONE



021 CONCRETE



170 ASH



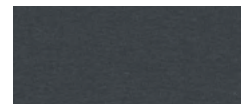
423 LIGHT GRAY



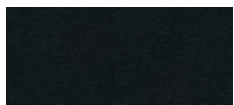
408 TAUPE



175 GRAPHITE



425 DOVE GRAY



446 HEMATITE



300 COAL



426 BLACK

Color combinations and configurations to a product may be limited. For more information about limitations be in touch with sales.

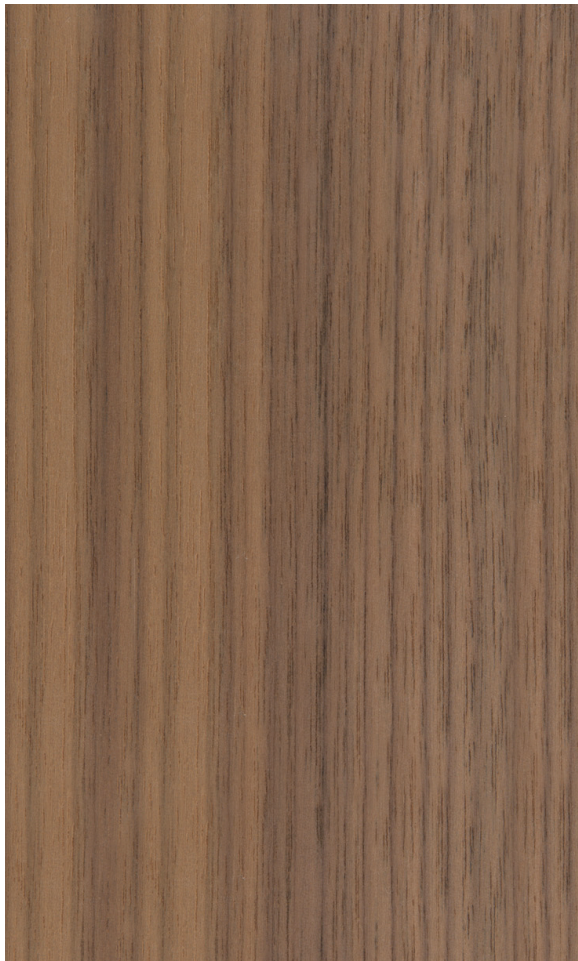
ORION FLAT

Wall Panel

WOOD

The wood used in Submaterial wall art and object products is solid stock hardwood. Currently, we offer white oak and walnut. These hardwoods are grown domestically and whenever possible we source wood from the Southwest. We take the use of ethically and sustainably sourced materials seriously. We make every effort to acquire wood from responsibly managed forests that provide environmental, social, and economic benefits.

submaterial **WOOD**



WALNUT



WHITE OAK

Color combinations and configurations to a product may be limited. For more information about limitations be in touch with sales.

SPECIFICATIONS

DESIGNER	Submaterial
PRODUCT NAME	Orion Flat
PRODUCT NUMBER	PANL-SUBM-0039-03
FAMILY NAME	Flat
PRODUCT CATEGORY	Wall Panels
MATERIALS	100% Merino Wool Felt, Responsibly Sourced Wood
MODULE DIMENSIONS	4 1/8" x 4 3/8", be in contact with sales for accurate sizes designed for your space.
COLOR OPTIONS	Filzfelt 100% Merino Wool Felt Swatch List, Submaterial Wood Swatch List
COLOR SPECIFICATION	To custom order a product, choose respective color assignments per product specification
INSTALLATION METHOD	French Cleat
INSTALLED DEPTH	1 5/8"
PURPOSE	Residential or Commercial Use, Interior Use Only
MAINTENANCE	The preferred steps taken for the cleaning process should consist of (in order of intensity): dusting with a lint roller, vacuuming with a clean soft brush, spot cleaning with water and mild detergent, using chemical stain removers. Periodic spot removal of lint can be achieved easily by using a standard tape lint roller. Once per year, it is recommended that the entire surface be given a light vacuum with a soft upholstery brush. Light dusting with a gentle cloth, on hard surfaces, is recommended. Most hard surfaces can take a light application of a natural, neutral-based cleaner, wiped away with a soft cloth.
LEAD TIME	Products on hand will ship out 2-3 business days and will use client's preferred method of shipping. If no preferred method of shipping is mentioned, ground shipping will be chosen. For custom orders, be in touch with sales for accurate lead times. Lead times depend upon material sourcing.
SUSTAINABILITY	100% Wool Design Felt is 100% biodegradable and Akustika 10 Substrate is 100% recyclable Contains no formaldehyde, 100% VOC free, no chemical irritants, and free of harmful substances 100% Wool Design Felt contributes to ©LEED certifications. Belting Leather is vegetable tanned. Ultrasuede is a premier synthetic blend of microfiber, partially using a plant-based polyester. All cork used is sustainably and efficiently sourced from Portugal, 100% VOC free, with no chemical irritants, and free of harmful substances. Ultrasuede is a premier synthetic blend of microfiber, partially using a plant-based polyester
CUSTOM	For custom inquiries affecting colorways, sizes and quantities in the set contact Sales@submaterial.com
VARIATION	All products are handmade at our New Mexico studio. Natural variations within the color and material composition are evidence of the handmade and 100% natural origin of the materials. Product colors are only indicative, as it is not possible to assure consistency of color in a natural product due to the natural color of natural materials and absorption of dyes, finishes, and grain. Color matching cannot be guaranteed on shipments and variation will be more pronounced beyond the normal commercial range.
COLORFASTNESS TO LIGHT	Felt, Class 4-5 (40hours)
COLORFASTNESS TO CROCKING	Felt, Class 3-4 (wet), Class 4-5 (dry)
WARRANTY + RETURNS	No warranties are offered on any Submaterial products. Most of our products are made to order, therefore we offer returns or exchanges due to manufacturer's defect only. Items must be returned in the original packaging and have no visible signs of wear or use. If you have a concern, please contact us within 3 business days of receipt of your products. Please retain the original packaging and wait for instructions from our sales team.