

submaterial

WOOD | GRADIENT

Wood Wall Systems

+1 505 891 8356
SALES@SUBMATERIAL.COM



© 2022 SUBMATERIAL LLC

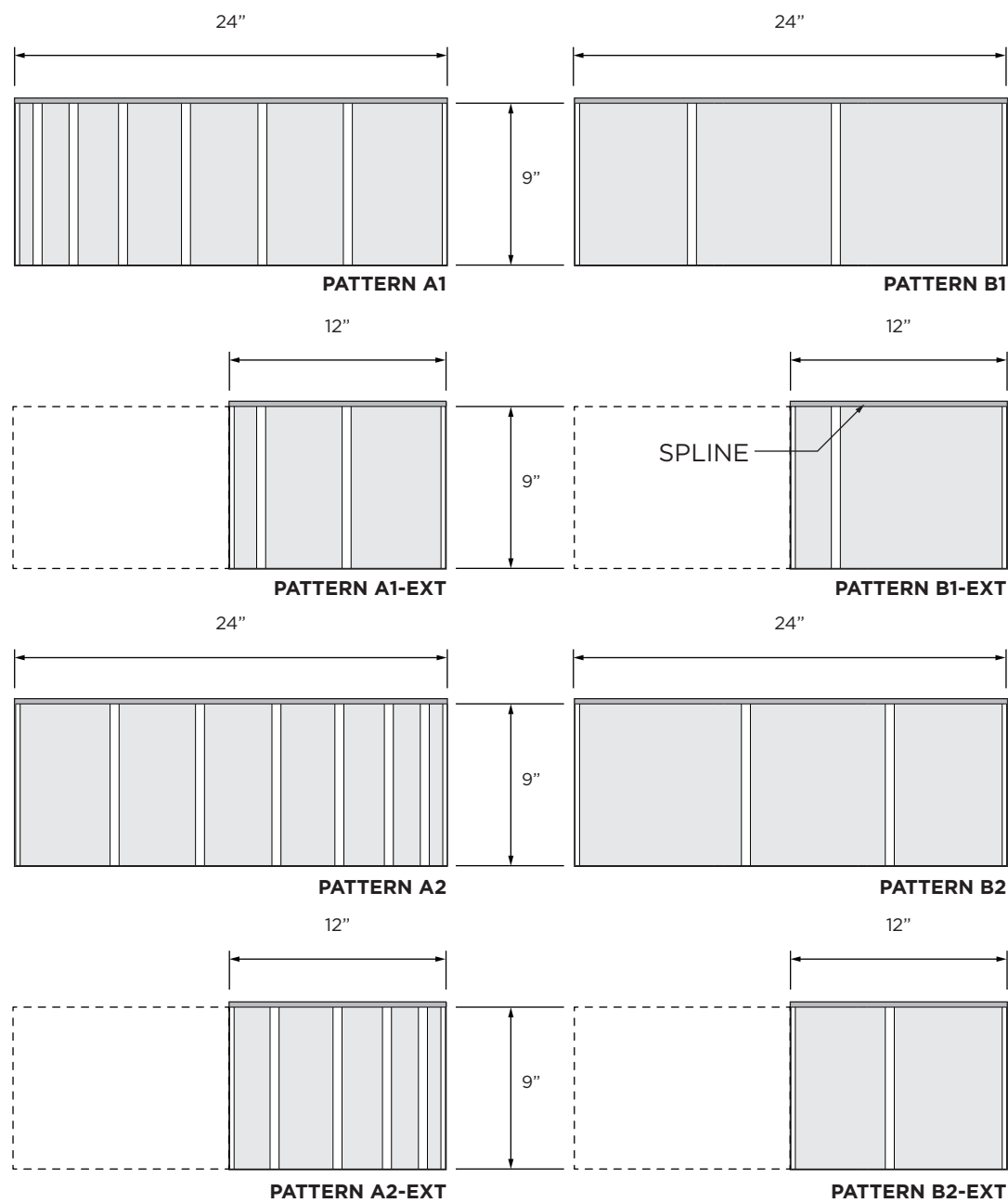


LIKE ASSEMBLING A PUZZLE, EACH MODULAR TILE HOLDS A PIECE OF THE PATTERN. THE BOLD GRAPHIC SURFACE IS ACHIEVED WITH LINES OF CORK INLAID IN WOOD VENEER.

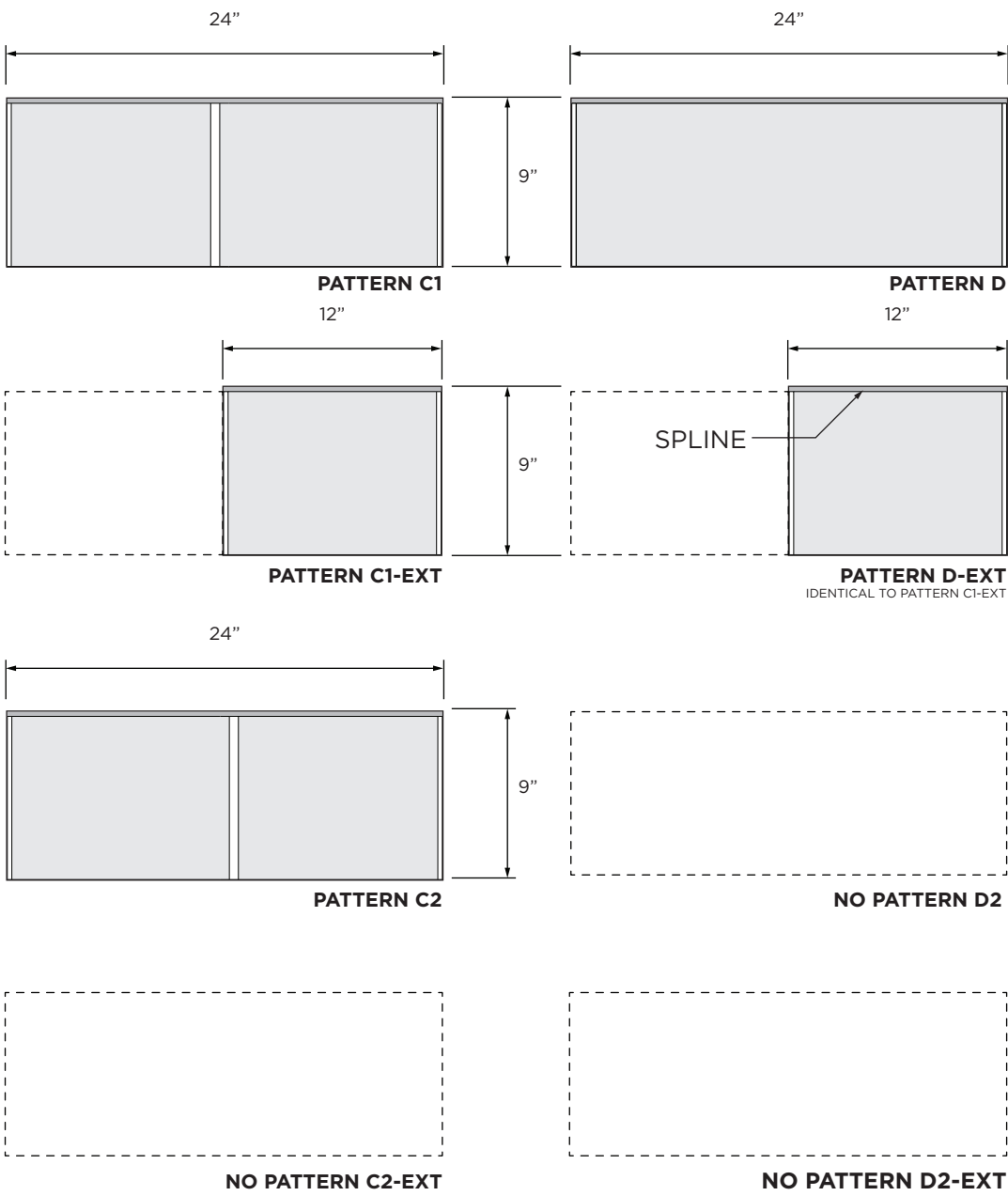
The Wood Series is a modular tile-based wall covering system. Created with the natural and renewable materials that we value; its easy geometry and precise craftsmanship reflect the ethos of our studio.



DIMENSIONS



DIMENSIONS



WOOD | GRADIENT

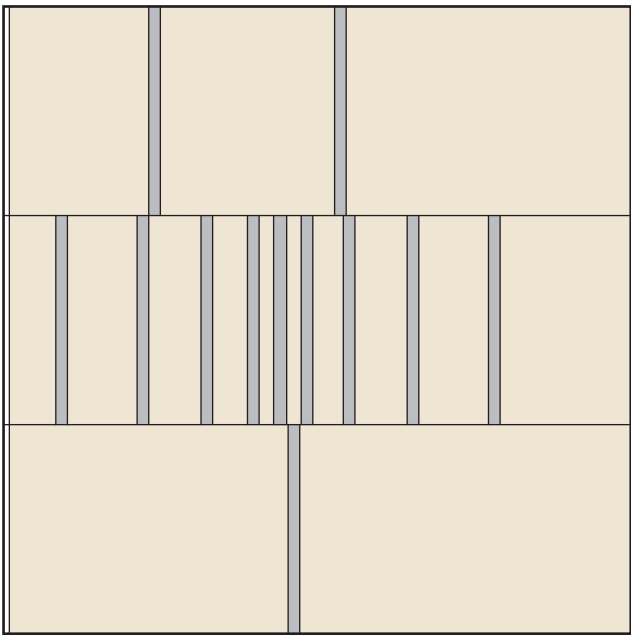
Wood Wall Systems

CUSTOMIZE YOUR PRODUCT

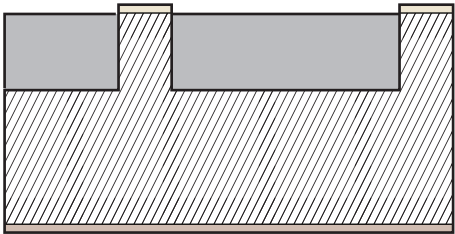
Diagrammed below are the materials used to create this Submaterial product. If you would like to make this product one-of-a-kind, select colors from the provided swatches on the following pages using the diagram to assist you in the material assignments. If you believe the customization you seek is outside of the standards listed below, please contact us. Color combinations and configurations to a product may be limited. For more information about limitations be in touch with us at sales@submaterial.com.

submaterial **WOOD**

AMORIM

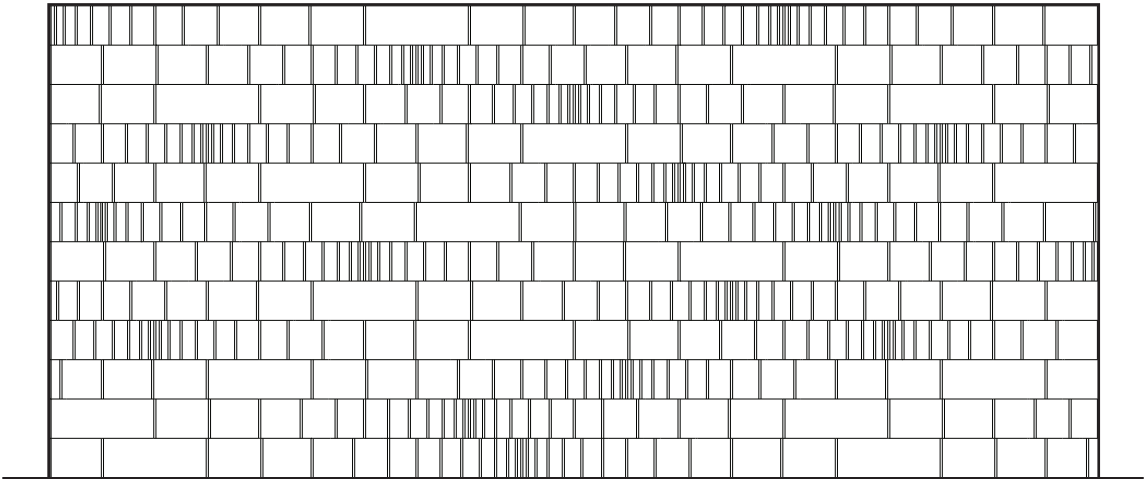


PATTERN LAYOUT DETAIL

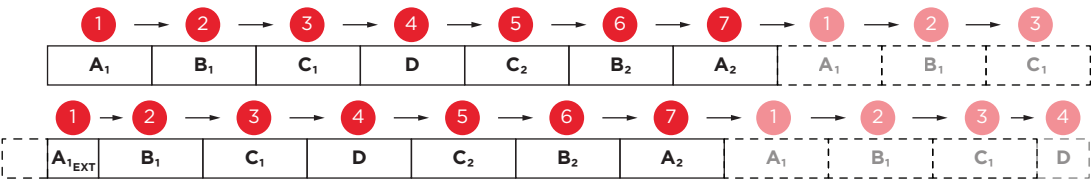


SECTION DETAIL

PATTERN LAYOUT



ELEVATION



PATTERN LAYOUT PER ROW

A ₁	B ₁	C ₁	D	C ₂	B ₂	A ₂	A ₁	B ₁	C ₁	
D _{EXT}	C ₂	B ₂	A ₂	A ₁	B ₁	C ₁	D	C ₂	B ₂	A ₁
C ₁	D	C ₂	B ₂	A ₂	A ₁	B ₁	C ₁	D	C ₂	
B _{2EXT}	A ₂	A ₁	B ₁	C ₁	D	C ₂	B ₂	A ₂	A ₁	B ₁
B ₁	C ₁	D	C ₂	B ₂	A ₂	A ₁	B ₁	C ₁	D	
A _{2EXT}	A ₁	B ₁	C ₁	D	C ₂	B ₂	A ₂	A ₁	B ₁	C ₁
C ₂	B ₂	A ₂	A ₁	B ₁	C ₁	D	C ₂	B ₂	A ₂	
A _{1EXT}	B ₁	C ₁	D	C ₂	B ₂	A ₂	A ₁	B ₁	C ₁	D
A ₂	A ₁	B ₁	C ₁	D	C ₂	B ₂	A ₂	A ₁	B ₁	
B _{1EXT}	C ₁	D	C ₂	B ₂	A ₂	A ₁	B ₁	C ₁	D	C ₂
D	C ₂	B ₂	A ₂	A ₁	B ₁	C ₁	D	C ₂	B ₂	
C _{1EXT}	D	C ₂	B ₂	A ₂	A ₁	B ₁	C ₁	D	C ₂	B ₂

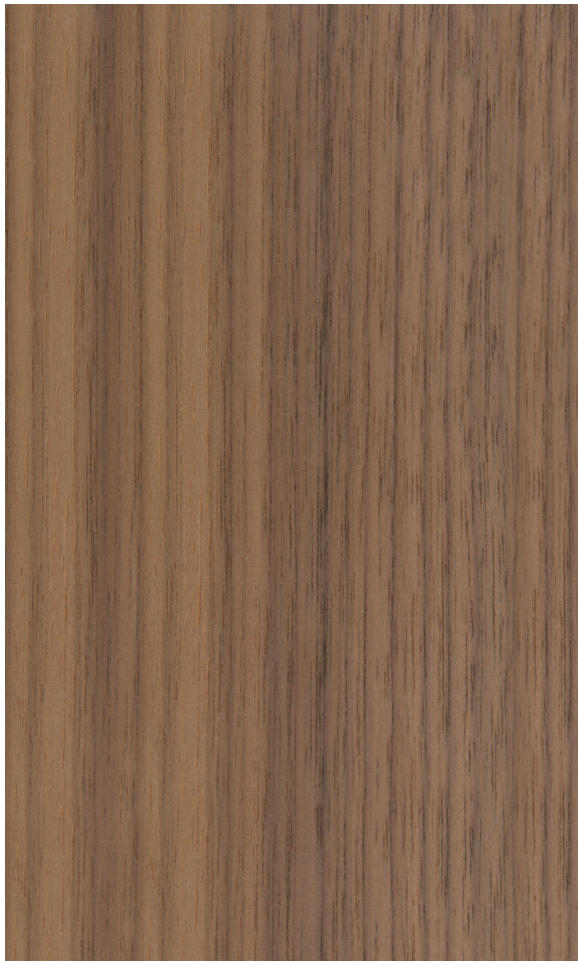
PATTERN LAYOUT

WOOD | GRADIENT

Wood Wall Systems

The veneer used at submaterial is sourced from domestically grown hardwoods such as white oak and walnut. Each veneer displays the color, grain, and figure of the tree. Veneer is especially eco-friendly as each log can be used entirely with minimal waste. The veneer and cork surface of the Wood Series is affixed to an MDF substrate which is made primarily from wood fiber that might normally be discarded. We strive to acquire wood products from responsibly managed forests that provide environmental, social, and economic benefits.

submaterial **WOOD**



WALNUT



WHITE OAK

Color combinations and configurations to a product may be limited. For more information about limitations be in touch with sales.

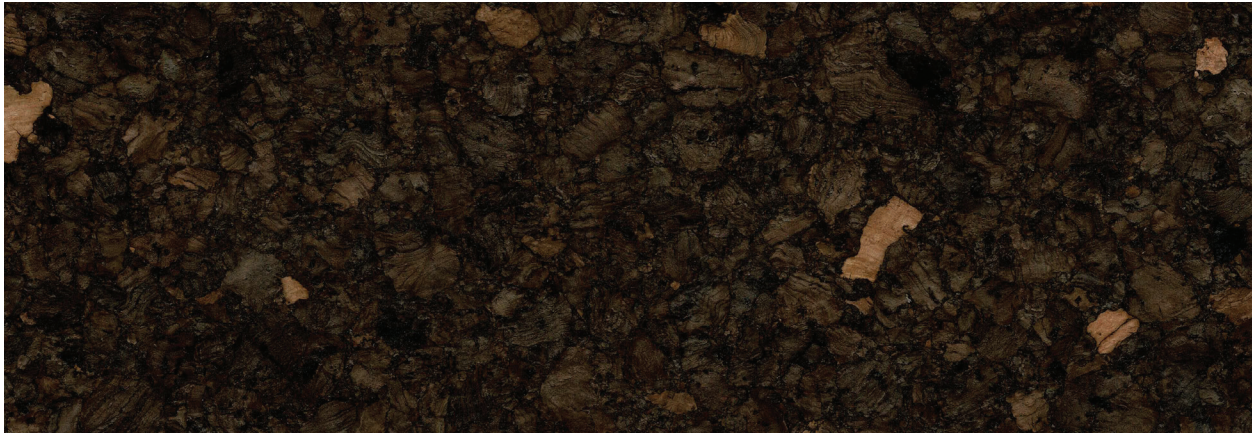
WOOD | GRADIENT

Wood Wall Systems

CORK AS INLAY MATERIAL

Used since antiquity for innumerable functions, cork is a completely natural raw material with unique properties which give it an unrivaled character. It is light, impermeable to liquids and gases, elastic and compressible, provides thermal and acoustic insulation, and is fire retardant. Furthermore, it is completely biodegradable, renewable, and recyclable. We source our cork from Corticeira Amorim, the world's largest cork processing group which has innovated and perfected the processing of this material over the last 150 years.

AMORIM



8702 SMOKED



9496 NATURAL

Color combinations and configurations to a product may be limited. For more information about limitations be in touch with sales.

SPECIFICATIONS

DESIGNER	Submaterial
PRODUCT NAME	Wood Gradient
PRODUCT NUMBER	WOOD-SUBM-0002-09
FAMILY NAME	Wood
PRODUCT CATEGORY	Wood Wall System
MATERIALS	Wood Veneer, Sustainably Sourced Cork
STANDARD DIMENSIONS	24" x 9" x ½"
ITEM WEIGHT	2.2 lbs per tile
COLOR OPTIONS	Submaterial Wood Swatch List, Amorim Cork Swatch List
COLOR SPECIFICATION	To custom order a product, choose respective color assignments per product specification.
INSTALLATION METHOD	Tongue and Groove Joinery - Direct Glue Using Heavy-Duty Clay-Based Wall Covering Adhesive
PURPOSE	Commercial or Residential Use, Interior Use Only
MAINTENANCE	Light dusting with a gentle cloth, on hard surfaces, is recommended. Most hard surfaces can take a light application of a natural, neutral-based cleaner, wiped away with a soft cloth.
LEAD TIME	Be in touch with sales for accurate lead times. Lead times depend upon material sourcing and order size.
SUSTAINABILITY	No chemical irritants, and free of harmful substances contributes to ©LEED certifications. All cork used is sustainably and efficiently sourced from Portugal, 100% VOC free, with no chemical irritants, and free of harmful substances. Veneer is especially eco-friendly. When sourcing veneer, three times more wood can be produced from each log in comparison to hardwood. MDF is constructed primarily from wood fiber. Wood shavings and other portions of the wood that might normally be discarded are instead recycled into MDF.
CUSTOM	For custom inquiries affecting colorways, sizes and quantities in the set contact Sales@submaterial.com.
VARIATION	All products are handmade at our New Mexico studio. Natural variations within the color and material composition are evidence of the handmade and 100% natural origin of the materials. Product colors are only indicative, as it is not possible to assure consistency of color in a natural product due to the natural color of natural materials and absorption of dyes, finishes, and grain. Color matching cannot be guaranteed on shipments and variation will be more pronounced beyond the normal commercial range.
WARRANTY + RETURNS	No warranties are offered on any Submaterial products. Most of our products are made to order, therefore we offer returns or exchanges due to manufacturer's defect only. Items must be returned in the original packaging and have no visible signs of wear or use. If you have a concern, please contact us within 3 business days of receipt of your products. Please retain the original packaging and wait for instructions from our sales team.