

submaterial

DIRECTORY

Mirror

+1 505 891 8356
SALES@SUBMATERIAL.COM



© 2023 SUBMATERIAL LLC

DIRECTORY

Mirror



THE GRID-LIKE ARRAY OF TABS ON THIS MIRROR PAY HOMAGE TO THE THOUSANDS OF YEARS HUMANS HAVE USED STACKING IN METHODS OF CONSTRUCTION AND ARCHITECTURE.

The tabs can be in a centered stripe across the reflection of the mirror, or half of one side. For utility, this product features a powder coated shelf which can support small tchotchkes, a wallet or sets of keys as you unload your belongings near your front door.



DIRECTORY

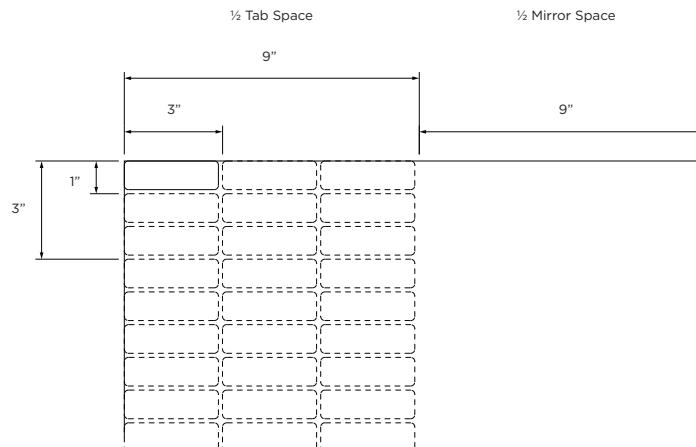
Mirror

CUSTOMIZE YOUR PRODUCT

Diagrammed below are the materials used to create this Submaterial product. If you would like to make this product one-of-a-kind, select colors from the provided swatches on the following pages using the diagram to assist you in the material assignments. If you believe the customization you seek is outside of the standards listed below, please contact us. Color combinations and configurations to a product may be limited. For more information about limitations be in touch with us at sales@submaterial.com.

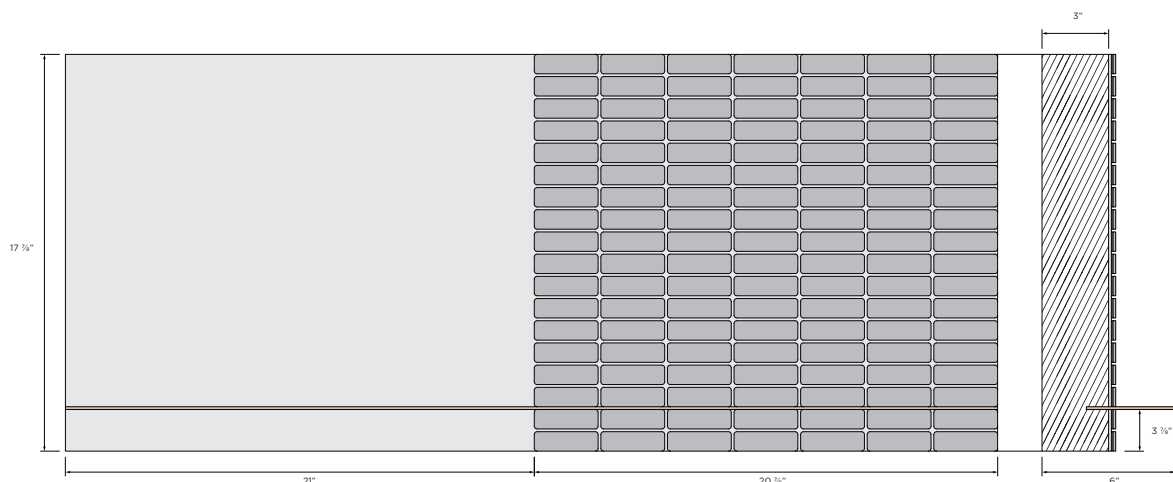


MODULE DIMENSIONS



EXAMPLE PANEL DIMENSIONS

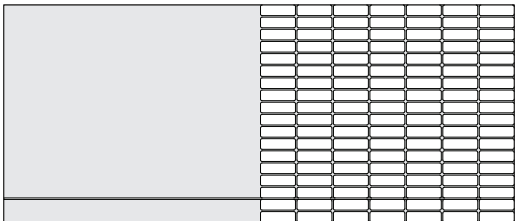
Note: Panel dimensions must be ordered in multiples of module dimension.



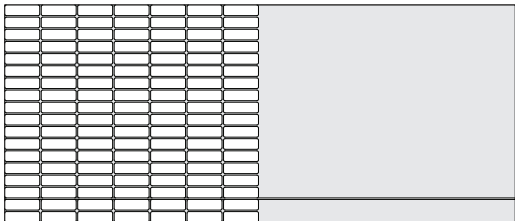
DIRECTORY

Mirror

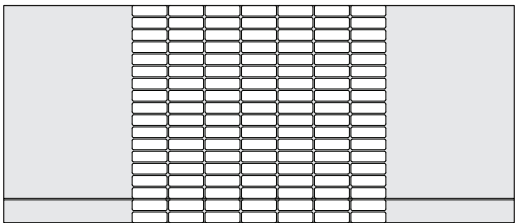
PATTERN OPTIONS



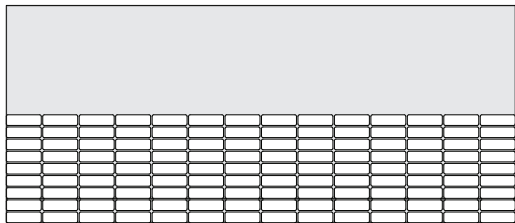
RIGHT ALIGNED



LEFT ALIGNED



CENTERED



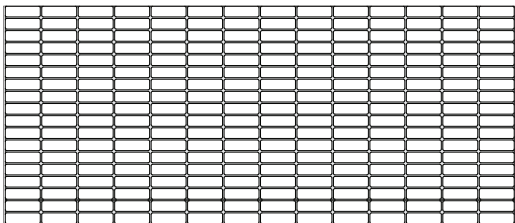
BOTTOM ALIGNED



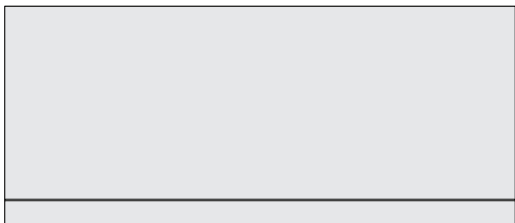
SPLIT



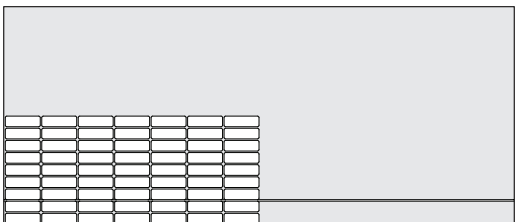
SKIPPED



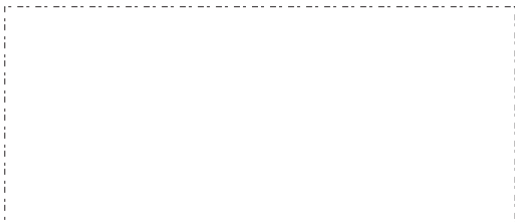
FULL



BARE



CORNERED



CUSTOM (BE IN CONTACT WITH SALES)

DIRECTORY

Mirror

FELT

Wool felt is one of the oldest man-made textiles. A biodegradable and renewable material, wool felt is moisture resistant, self-extinguishing, and known for its thermal and acoustic insulation properties. We employ Filzfelt products which are German-milled, 100% wool manufactured. This Merino wool is sourced primarily from Australia, New Zealand, and South Africa. Slight variation in color is a result of the manufacturing with a natural material.

filzfelt •



487 PEACH



023 CORAL



945 DRAGON FRUIT



221 RASPBERRY



137 RED WINE



209 BORDEAUX



102 CHERRY



201 RED



125 TOMATO



179 BRIGHT RED



180 TERRACOTTA



173 MANGO



105 RUST



573 COPPER



116 ORANGE



495 APRICOT



124 GOLD



131 HONEY



509 CAMEL



550 OCHRE



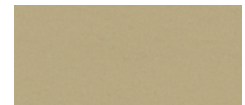
275 MUSTARD



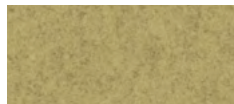
108 LEMON



403 CORN



535 SESAME



203 VANILLA



027 CHARTREUSE



384 LINDEN



713 KIWI



377 MAY GREEN



732 FERN



378 OLIVE



260 SPROUT



343 DARK GREEN



472 MINT



312 LAGOON



405 STEEL BLUE



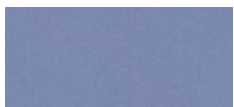
282 DARK BLUE



686 GENTIAN



458 ROBINS EGG



113 PERIWINKLE



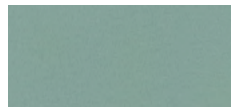
640 GARNET



269 VIOLET



435 EMERALD



575 SAGE



345 PACIFIC



215 SEA



111 GRAPE



272 ROYAL BLUE



284 SKY



099 PURPLE



634 BLUSH



437 AUBERGINE



625 PINE



483 ADRIATIC



308 TEAL



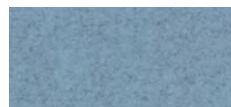
540 OCEAN



626 AZURE



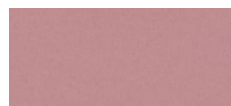
286 BLUE



613 GLACIER



667 AMETHYST



671 PEONY



250 TRUFFLE BROWN



248 JADE



548 TURQUOISE



698 FOG



533 INDIGO



647 COBALT



995 WATER



551 ICE



242 PINK



255 LILAC



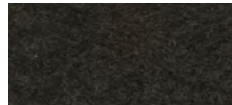
220 FAWN

DIRECTORY

Mirror



411 ALPACA



190 HEATHERED BROWN



200 RAW BROWN



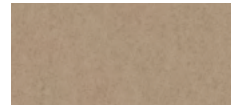
331 SAHARA



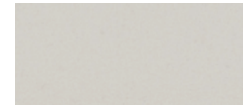
311 ALMOND



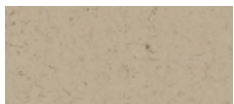
467 SAND



481 SANDSTONE



100 OFF WHITE



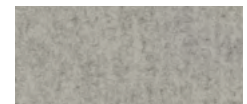
110 RAW WHITE



160 BEIGE



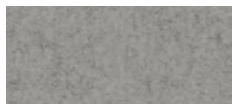
526 CHAMPAGNE



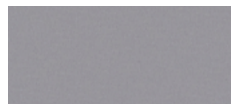
150 HEATHERED WHITE



428 SILVER



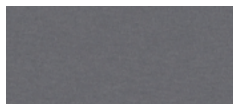
427 STONE



021 CONCRETE



170 ASH



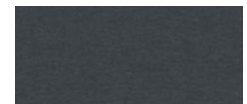
423 LIGHT GRAY



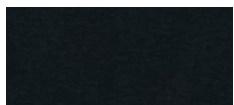
408 TAUPE



175 GRAPHITE



425 DOVE GRAY



446 HEMATITE



300 COAL



426 BLACK

Color combinations and configurations to a product may be limited. For more information about limitations be in touch with sales.

DIRECTORY

Mirror

LEATHER

An ancient and variable material. Each piece of leather produced is unique in character. Many features of natural leather make it superior to synthetic products including durability, comfort, beauty, suppleness, and resilience. We work exclusively with full grain leathers from Spinneybeck, which has supplied and manufactured full grain, aniline dyed Italian leathers for upholstery, architectural, and interior design use for more than five decades.

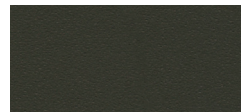
spinneybeck



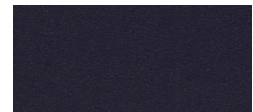
BL 1905 RED



BL 1907 BURNT ORANGE



BL 1911 DARK GREEN



BL 1913 INDIGO



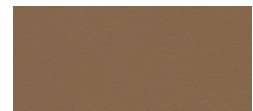
BL 1904 COGNAC



BL 1924 WARM BEIGE



BL 1903 TAN



BL 1922 KHAKI



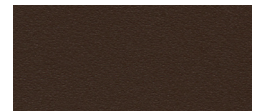
BL 1921 TAUPE



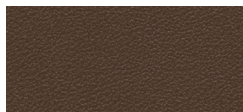
BL 1902 CHOCOLATE



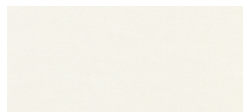
BL 1923 BROWN



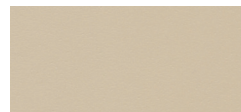
BL 1901 DARK BROWN



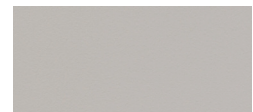
BL 1925 UMBER



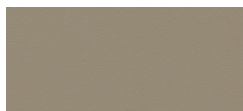
BL 1914 WHITE



BL 1919 CREAM



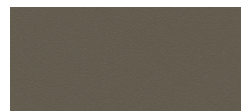
BL 1916 LIGHT GRAY



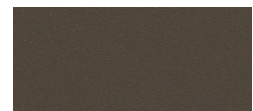
BL 1920 PUTTY



BL 1918 MEDIUM GRAY



BL 1917 GUNMETAL



BL 1915 SMOKE



BL BLACK

Color combinations and configurations to a product may be limited. For more information about limitations be in touch with sales.

DIRECTORY

Mirror

CORK AS SUBSTRATE

A completely natural raw material with unique properties which give it an unrivaled character. It is light, impermeable to liquids and gases, elastic and compressible, provides thermal and acoustic insulation, and is fire retardant. Furthermore, it is completely biodegradable, renewable, and recyclable. We source our cork from Corticeira Amorim, the world's largest cork processing group which has innovated and perfected the processing of this material.

AMORIM



8266 RED



8246 GREEN



8276 BLACK



8226 BLUE

Color combinations and configurations to a product may be limited. For more information about limitations be in touch with sales.

DIRECTORY

Mirror

POWDER COATED FINISHES

RAL colors are used to define standard colors across various powder coated surfaces. The most popular manufacturer of powder coats, RAL colors are used in architecture, construction, industry and road safety. Submaterial uses RAL colors for their consistency in color matching. Below is a curated collection of the numerous colors we offer to powder coat any product using a powder coated surface. Note we cannot guarantee matte or gloss finishes, color matching can be verified using the RAL Colour chart, available online.

RAL COLOURS

STANDARD COLORS (PRICE INCLUDED)



RAL 7047 TELEGRAY 4



RAL 38/30019 SLATE GRAY



RAL 7015 DARK GRAY

SUBMATERIAL CURATED COLORS (ADDITIONAL COST)



RAL 9011 GRAPHITE BLACK



RAL 9003 SIGNAL WHITE



RAL 7032 PEBBLE GRAY



RAL 1013 OYSTER YELLOW



RAL 3007 BLACK RED



RAL 5008 GRAY BLUE



RAL 6005 MOSS GREEN



RAL 1012 LEMON YELLOW



RAL 3009 OXIDE RED



RAL 5009 AZURE BLUE



RAL 6003 MINT TURQUOISE



RAL 4009 PASTEL VIOLET



RAL 3000 FLAME RED



RAL 5014 PIGEON BLUE



RAL 6027 LIGHT GREEN



RAL 3015 LIGHT PINK

Color combinations and configurations to a product may be limited. For more information about limitations be in touch with sales.

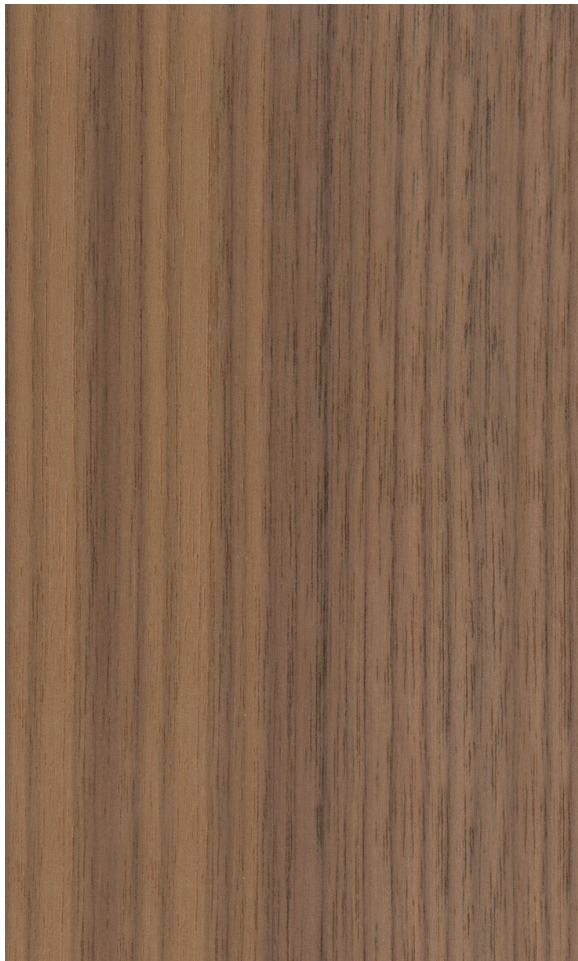
DIRECTORY

Mirror

WOOD

The wood used in the this Submaterial piece is solid stock hardwood or may be veneered. Currently, we offer white oak and walnut. Whenever possible we source wood from the Southwest. We take the use of ethically and sustainably sourced materials seriously. We make every effort to acquire wood from responsibly managed forests that provide environmental, social, and economic benefits.

submaterial **WOOD**



WALNUT



WHITE OAK

Color combinations and configurations to a product may be limited. For more information about limitations be in touch with sales.

DIRECTORY

Mirror

DESIGNER	Submaterial
PRODUCT NAME	Directory
PRODUCT NUMBER	MIRR-SUBM-0002-03
PRODUCT CATEGORY	Mirror
MATERIALS	100% Merino felt or vegetable-tanned leather laminated to a black or red binder cork, glass mirror, with a powder coated aluminum shelf with a veneered baltic birch wood frame
MODULE DIMENSIONS	6" x 2", 1:1 tab to open mirror ratio, see custom pattern options for more details.
MAXIMUM DIMENSIONS	48" x 96"
ITEM WEIGHT	-30lbs for a 42" x 18" mirror, be in contact with sales for approximate weights for your custom piece.
COLOR OPTIONS	Submaterial Wood Swatch List, RAL Color Powder Coat Swatch List, Filzfelt or Spinneybeck, Amorim
COLOR SPECIFICATION	To custom order a product, choose respective color assignments per product specification.
INSTALLATION METHOD	French Cleat
INSTALLED DEPTH	6"
PURPOSE	Commercial or Residential Use, Interior Use Only
MAINTENANCE	Lightly dust with a cloth made from gentle fibers. We recommend canned air for blowing away smaller debris between the tabbed components. Use Distilled water and mild soap with a soft cloth to wipe away any residue or substance. Never spray cleaning solution directly on mirror, apply to cloth before wiping away residue. Be sure to dry with dry cloth after using wet method. Use glass cleaner and a soft cloth to clean surface of mirror. Never spray cleaning solution directly on mirror, apply to cloth before cleaning surface of mirror.
LEAD TIME	Products on hand will ship out 2-3 business days and will use client's preferred method of shipping. If no preferred method of shipping is mentioned, ground shipping will be chosen. For custom orders, be in touch with sales for accurate lead times. Lead times depend upon material sourcing.
SUSTAINABILITY	Wood acquired from responsibly managed forests, when possible.
CUSTOM	For custom inquiries affecting colorways, sizes and quantities in the set contact Sales@submaterial.com.
VARIATION	All products are handmade at our New Mexico studio. Natural variations within the color and material composition are evidence of the handmade and 100% natural origin of the materials. Product colors are only indicative, as it is not possible to assure consistency of color in a natural product due to the natural color of natural materials and absorption of dyes, finishes, and grain. Color matching cannot be guaranteed on shipments and variation will be more pronounced beyond the normal commercial range.
COLORFASTNESS TO LIGHT	Felt, Class 4-5 (40hours), Leather, Class 2-3
COLORFASTNESS TO CROCKING	Felt, Class 3-4 (wet), Class 4-5 (dry), Leather Class 4 (wet), Class 4-5 (dry)
WARRANTY + RETURNS	No warranties are offered on any Submaterial products. Most of our products are made to order, therefore we offer returns or exchanges due to manufacture's defect only. Items must be returned in the original packaging and have no visible signs of wear or use. If you have a concern, please contact us within 3 business days of receipt of your products. Please retain the original packaging and wait for instructions from our sales team.